

The History for you and for me

LIFELONG LEARNING PROGRAMME
Grundtvig Learning Partnership



Lifelong
Learning
Programme

With the support of the Lifelong Learning programme
of the European Union

This project has been funded with support from the
European Commission.

This document reflects the views only of the author,
and the Commission cannot be held responsible
for any use which may be made of the information
contained therein

SECTION 1. INTRODUCTION

General introduction to the leaflet

This leaflet is the final product of The History for you and for me project". The leaflet has been conceived as a practical guide to users that would like to:

- know more about the aims of the Grundtvig funding programme, with specific reference to the "Learning partnership strand";
- learn about best practices in the field of accessible tourism, with specific reference to Education and Training, ICT supporting tools, experiences of local development through the co-operation of multi level stakeholders;
- as a Learning Object which convey training contents and different methodologies in a user friendly and replicable way.



Presentation of the leaflet aims

Present the background of the project: in doing so, the leaflet will disseminate information on Grundtvig Funding Programme, focusing at the same time on the issues that the project dealt with and on the themes and problems that partners discussed during the project development, trying to illustrate and propose suitable solutions through best practices exchange.

Present the project activities and results: the manual will briefly describe the structure of the project activities and the process which led to the identification of core best practices and to their assessment against evaluation criteria derived from EU current policies.

Present best practices proposed by partners during the project: some of the best practices that partners presented during project meetings, which were selected by each project partner as outstanding examples of successful experiences in the field of accessibility and accessible tourism will be presented more in details through text, multimedia, pictures, mention of further references to be used to have more information.



Introduction to the project aims and background

Introduction to the funding programme

The proposed learning partnership (LP) focuses on social tourism as a practical learning experience for elderly and disabled people. Tourism should not be considered as a mere recreational or entertainment – related activity but an opportunity to develop key competencies and skills, both at a cognitive and at a relational level, with particular reference to Communication in the mother tongue, Communication in foreign languages, Social and civic competences, Cultural awareness and expression.

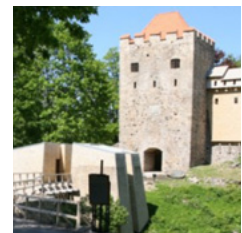
The importance of tourism

The tourism has a key role of in Europe's economy, it is also recognised as important part of informal adult education. This is innovative way to improve lifelong learning opportunities to Europeans. Unfortunately, there still are many people who are not able to take full advantage of these opportunities – people with disabilities, elderly people, new families with small children in prams – they all are not able to use many historical places and touristic attractions just because these places are not accessible for them. There are around 50 million people with disabilities in EU. As the demographic changes lead towards an ageing population in Europe the number of those who need accessibility growing fast.

Although historical heritage buildings undoubtedly are important part of many touristic routs, provision of accessibility of them often is technically complex process. This is a real challenge - the desire to preserve visual appearance of historic buildings and hence its value but at the same time making it accessible to everyone.

We need to make sure that products and the built environment in tourism sector are accessible to all, regardless of their ages, ability, or status in life.

The objective of the project is to study innovative ideas and solutions to provide accessibility of historical heritage which is important part of each travel rout. This could be included in the process of non formal and informal learning for elderly people (from 60 years old on) and disabled people during travel experiences, mainly through concrete experiences on the field, in order to make travelling a true learning experience.



General and specific aims of the project

The aim of the The History for you and for me project is to promote meeting, discussion and co-operation among different stakeholders in accessible tourism and subsequent practical exploitation in tourist cities and areas of the partners' acquired skills and competencies.

Objectives of the project

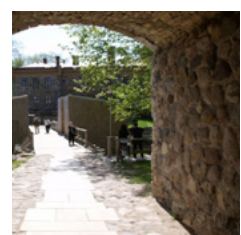
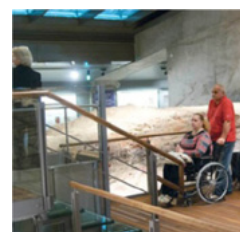
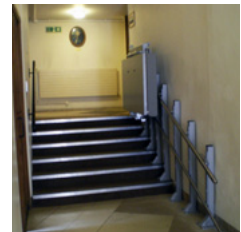
The aim of the project are:

- Study innovative ideas and solutions to provide accessibility of historical heritage which is important part of each travel rout. This could be included in the process of non formal and informal learning for elderly people (from 60 years old on) and disabled people during travel experiences, mainly through concrete experiences on the field, in order to make travelling a true learning experience.
- Identify and benchmark already existing best practices and tools, to capitalize the experiences already achieved and innovate them through cross-fertilization.
- Develop project outcomes/products (electronic leaflet, e-training courses) which could convey training contents in an user friendly, replicable way and which could be integrated by guiding tutorials and aggregated, shared and disseminated through the different electronic tools like – Skype, Dropbox, partners webpage.
- Set the basis for future stronger cooperation amongst the project partners.

The partners involved in the project have therefore compared the methodologies, practical skills, experiences and tools they exploit in their usual activity to make ELDERLY PEOPLE (from 60 years old on) and DISABLED PEOPLE travel experiences true experiences of learning. Also barriers to achieve this objective will be analyzed (e.g. in terms of accessibility, particular needs in preparing the travel, ...).

In this way, tourism will not be considered as a mere recreational or entertainment – related activity but an opportunity to develop key competencies and skills, both at a cognitive and at a relational level. The proposed LP puts together subjects having different skills and competencies, to debate existing approaches, methodologies, tools (benchmarking) already exploited in partners organisation to develop creative solutions to cope with the challenges related to social tourism and innovate them.

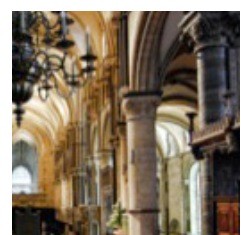
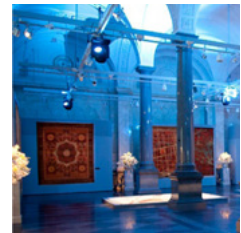
Existing learning methodologies, best practices and tools will therefore be innovated through cross-fertilization and further translated into e-Learning Objects (LO).



Presentation of the project activities

The project includes two main kinds of activities:

1. Organisation of workshops between project partners: each project partner organises a meeting dealing with one or more aspects linked to urban accessibility in tourism, according to its most relevant expertise. This includes:
 - good practices in the field of accessible tourism;
 - final event hosted by a partner having expertise in dissemination activities to present the project and its results.
2. Dissemination: publication and diffusion in each project partner area of:
 - the project activities and results;
 - the identified best practices and methodologies;
 - a possible action plan for further co-operation.



Presentation of the project partners

Presentation of the project partners

The History for you and for me consortium consists of 8 Partners from 6 countries: Italy, Latvia, United Kingdom, Lithuania, Estonia, Romania.

The PROJECT consortium is in an excellent position to work towards the target objectives of the Grundtvig program, because all key actors are present, including, public training centers, companies, Stakeholders' Associations.

The official project partners are:

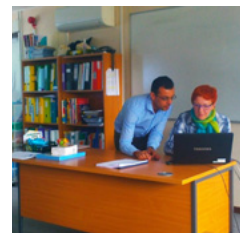
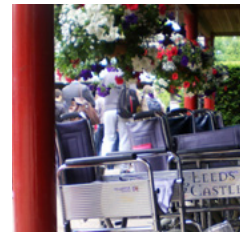
SUSTENTO

The Latvian Umbrella body for Disability Organizations SUSTENTO is non-profit organisation uniting 24 nongovernmental organizations, which incorporate people with different disabilities and chronic illnesses. The organization has 20 thousand members and works across all of Latvia. The general objective of SUSTENTO is to take care of the common interests of the member organisations. The aim of the organisation is to promote opportunity of equal participation for all members of the society, to enable protection of rights of people with disabilities in order to provide inclusion of them in to society.

SUSTENTO is an organisation which has with previous projects insured reliability in the eyes of the public and confirmed that the basis of every activity is situation analysis and adequately chosen methods, to accomplish the main task in eliminating any problem – making information available and receivable.

SUSTENTO is working to promote equitable and effective access to health care services. One of main tasks is to promote the policy, which protect the rights of people with disabilities and chronic illnesses to have the same quality health care as all other citizens. In order to fulfil this task the study has been carried out about the health care accessibility for people with chronic illnesses. Representatives of the organisation are included in the work groups of Latvian Ministry of Health to develop new legislation, based on the principles of antidiscrimination and equal rights.

SUSTENTO is member organisation of European Disability Forum.



Presentation of the project partners

Pixel Service & Consulting Srl

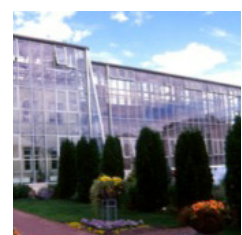
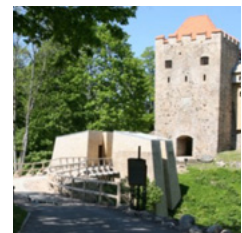
Pixel Service & Consulting Srl is a private company operating in the ICT field, developing web solutions and specific products focused on tourism.

The company is working on some projects related to accessibility in tourism, developing a special platform to support a tourism strategic plan with technological services designed to answer also to special needs of people with disabilities.

Moreover, the CEO mr. Gelfi, has some institutional roles and he already has an experience in other European projects related to accessibility.

Lithuanian Forum for the Disabled (LNF)

Lithuanian Forum for the Disabled (LNF) is an umbrella for non-governmental, non-profit organization. At the moment it has 14 members – national organizations representing over 250 000 people with disabilities of Lithuania. The mission of LNF is to strive toward state policy that promotes human, social and economical rights for disabled. LNF follows the principles of equal possibilities for all and nondiscrimination for people with disabilities. The work direction of LNF is: to promote disability in the governmental and local policy, as well as influencing process of adopting positively set legislation for people with disabilities, to promote policy, which protect rights of the people with special disabilities, to cooperate with different agencies on national and local level. LNF is seeking, that all information and all surrounding disabled needed will be accessible for all. In other hand the all information must be accessible. All information about the project activities and results will be presented in easy-to-read language.



The BumbleBee Alliance CIC's – UK

The BumbleBee Alliance CIC's offices and work is based primarily in the East Kent Coalfield Area of Kent in the South East of England, a disadvantaged area which encompasses large parts of rural Dover District, Canterbury District and areas of great disadvantage in Thanet such as Ramsgate and Margate. The organisation is a well respected and award winning, non profit, Community Interest Company which works in true partnership with the local community, the government and corporate business to help inspire and educate individuals with the aid of activities and social and educational projects. The main groups the organisation serves are: Young People with disabilities, and those with profound and additional educational needs, Elderly people, Young offenders, and those from disadvantaged communities who are NEET (Neither in Education, Employment or Training) who we encourage to participate in experiential and informal education as a way of moving them forward into training or employment. The organisation is very interested in accessibility issues for disabled people as the majority of our clients fall into

Presentation of the project partners

this category. The BumbleBee Alliance CIC uses many historic buildings in East Kent such as Dover Castle, Canterbury Cathedral, and the Maison Dieu in Dover for training and heritage events and we have experience of overcoming a multitude of accessibility issues for our participants such as resource issues for the deaf, toilet issues for those with physical disabilities and also issues of access to upper and lower floors of ancient buildings for wheelchair using participants. We will be able to share good practice and use our experience for the benefit of the partnership.

Consulmarc Sviluppo S.r.l. (ITA)

Consulmarc Sviluppo was established in 1979, with the aim of giving support and technical assistance for the development of companies and other bodies at European level, with special regard to the fields of intercultural dialogue, youth inclusion, ICT, non formal training and vocational training.

Consulmarc has its Head office in the North-east of Italy, an operational office in Brussels, as well as branch offices in Zagreb (Croatia) managed by local partners.

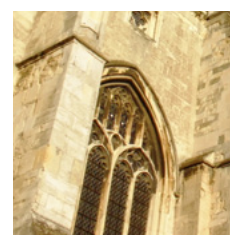
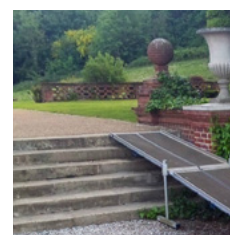
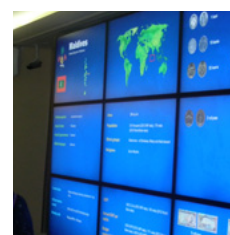
Consulmarc Sviluppo is articulated in two divisions.

The European Projects Division was created in 1990 and it supports private and public bodies in their access and participation to EU Programmes and initiatives. Consulmarc Sviluppo is itself a partner in various projects; Consulmarc is for instance the promoter of five training courses published in the EC Grundtvig Database. These courses are focused on subjects such as European public procurement, Sustainable development, European project design in the field of education and training, etc.

Consulmarc Sviluppo is also founding member of European Academy Network (www.eanetwork.be), with head office in Brussels, whose partners are training institutes, Universities, associations and private companies from different EU Countries, involved in lifelong learning programmes.

The HR Division is devoted to supporting enterprises in their staff selection and recruitment processes and in the management of their human resources. Consulmarc is credited with the Region of Veneto for the provision of job-related services and with the Italian Ministry of Employment and Welfare for the activities related to outplacement policies for recontracting and crisis prevention of companies (Auth. n. 13/1/0010854 of 6/8/2009).

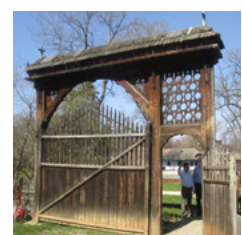
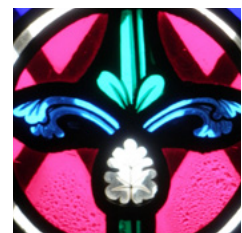
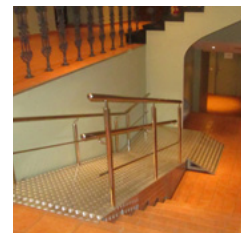
Consulmarc, thanks to its experience in European policies and programmes will try to define the context in which the project should be developed.



Presentation of the project partners

SA Eesti Agrenska Fond

The Estonian Agrenska Foundation is established in 2003 as a Estonian-Swedish jointly run service for education and training of families where there is a disabled child. The aim of the Foundation is to ease the everyday life of families who are raising a disabled child by offering consulting, family activities, respite care services and help for the family to cope with the disability of their child better. The social model of disability is embraced and the Foundation is housed in the former estate of Tammistu close to the second largest town of Estonia - Tartu. The premises are cultural heritage protected and the Foundation is seeking to alter and renovate the building in order to make it fully accessible and suitable for use of the target group. The Tammistu family center is participating in the Forgotten Manors visitors game, which is an initiative of schools and children centers housed in cultural heritage protected buildings where the accessibility and usability of the premises can be a major challenge. The Estonian Agrenska Foundation is working with dissemination of the accessibility of the cultural heritage protected buildings in Estonia and is in the process of making their own premises fully accessible, which will hopefully be accomplished without further delay. Best practices on everyday service provision in historical premises will be offered in the project and examples of transformation of abandoned cultural heritage protected sites is also a big experience of the Foundation, to be shared. The Foundation is working under protection of Mrs. Evelin Ilves, First Lady of Estonia.



Juvenile Justice International CIC

Juvenile Justice International CIC is an international, non profit , Community Interest Company, based in Folkestone, Kent. The organisation works to benefit disadvantaged young people up to the age 21 years (25 years for those who are disabled or vulnerable) and particularly those who have offended or at risk of offending, those with disabilities and those who misuse alcohol or drugs. We offer specialist training programmes to help up skill and find further training or employment . Our work normally takes place in disadvantaged communities and closely with Social Services, probation Service and other key agencies. As an international focussed organisation we work outside the UK and have particular experience of working in North America. We would like to bring our international experience of working with young adults who have disabilities and accessibility issues and best practice of how these issues are addressed in other countries for the benefit of the partnership and project.

Presentation of the project partners

Federatia ONPHR - National Organization of Disabled People

Federatia ONPHR - National Organization of Disabled People in Romania Federation was founded in 1994 and it is a non-governmental, humanitarian, human rights, apolitical and non-profit organization. The Federation has 30 member organizations, bringing together over 75 associations and foundations representing the interests of over 150,000 people with disabilities.

ONPHR programs and initiatives are aiming to extend and strengthen the organization in a powerful federation, to communicate with national and international society at all its levels, in order to support the full integration of disabled persons in Romanian society. Moreover, our programmes for disabled persons are strengthened by our lobby and advocacy initiatives.

We will be able to share good practice and use our experience for the benefit of the project. Within the project it will play a key role, taking into account that it represents persons with disabilities, who are one of the major target groups of this project.



Access signs for disable people

Legenda - Access signs for disable people



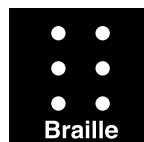
Wheelchair access



Gesture language interpreters displays



Wheelchair WC access



Braille information access



Audio description available



Induction loop with T



Wheelchair telephone access



Audio description available



Wheelchair ramp access



Guide dogs welcome



Impaired vision access



No dogs except guide dogs



Rundale Palace Museum and Park



contacts

Rundāle Palace museum
 Pilsrundāle Rundāles pagasts
 Rundāles novads
 LV-3921, Latvija
 Tel.: +371 63962274
 Website: www.rundale.net



The Rundāle Palace is set amidst the fertile Zemgale Plains in the south of Latvia. The Rundāle Palace ensemble, one of the most outstanding monuments of Baroque and Rococo architecture in Latvia, was built between 1736 and 1740 as a summer residence for Ernst Johann Biron, Duke of Courland and a favorite of the Russian Empress Anna Ioannovna. The palace was designed by the Russian court architect Francesco Bartolomeo Rastrelli and built under his supervision.

The palace and park are accessible for people on wheelchairs.

Accessibility



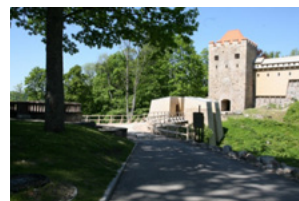


Sigulda Castle Ruins



contacts

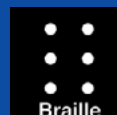
Pils iela 18, Sigulda district, Sigulda
Tel.: +371 67971335
Website: tourism.sigulda.lv



The Order of the Brothers of the Sword began building Sigulda castle in 1207. Initially, it was a castellum-type fort; following the defeat of the Brothers of the Sword in 1236, the Livonian Order modified it. During the Great Northern War, the castle was destroyed and never restored again. The south-west section of the convent building with Gothic window lintels and the main gate tower have survived to the present day.

Tactile map is available also for blind people.

Accessibility





Museum Of Art “Riga Bourse”

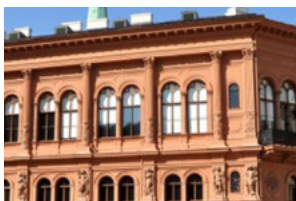
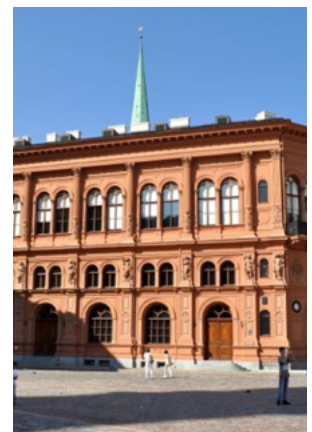


contacts

Dome Square 6, Riga, Latvia

Tel.: +371 67 223434; +371 67 357534

website: www.rigasbirza.lv



With the opening of a new type of museum, 2011 marks a turning point in the cultural life of Latvia. Although visitors will recognise the collections of the former Museum of Foreign Art in the displays, the working style has a new attitude to specialisation. The museum is positioned as a point of cultural exchange where excellence is more important than national origin.

There is possibility to book excursion accessible for blind people.

Accessibility





Money Museum (The Bank of Lithuania)

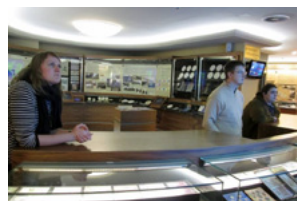


contacts

Totorių Street 2/8,
Vilnius, Lithuania.

Tel.: +370 5 268 0334,
+370 5 268 0077,

Website: www.lb.lt/lb_pinigu_muziejus



The Museum was established in 1999. The Money Museum is located in the very centre of Vilnius at the intersection of Gediminas Avenue and Totorių Street. The Money Museum is a modern museum which allows visitors to see valuable exhibits and get acquainted with the provided information on world money and financial history themes.

The Museum is adapted for wheelchair users and provides audio guides for persons with vision impairments. Money Museum is the only one in the Baltic countries which provides gesture language interpreters displays for persons with hearing impairments.

Accessibility



Castle Medininkai

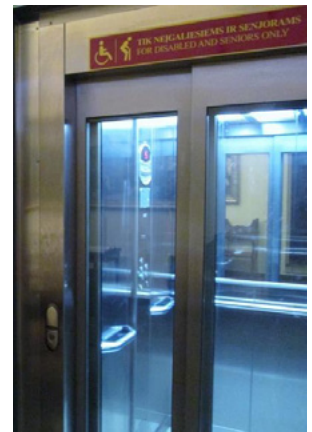


contacts

Šv. Kazimiero str. 2, LT-13192

Medininkai village, Vilnius

Website: www.medininkaipilis.lt



Nowadays Medininkai Castle is under disposition of Trakai History Museum. Medininkai Castle donjon has 4 exposition halls. Cannons, stone shells, and archaeological finds are presented in the hall on the first floor. Visitors are introduced to the brick castles of the Lithuanian Grand Duchy. In the hall of the second floor they can see the arms of the Grand Duchy of Lithuania from the 14th to 18th centuries.

Medininkai Castle is adapted only for wheelchair users. Disabled visitors can freely visit exhibitions in all floors and the representation hall. There were hosted some events for wheelchair users.

Accessibility





Lithuanian Grand Dukes Palace

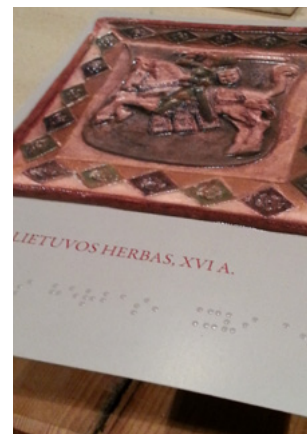


contacts

Katedros a. 4, LT-01143 Vilnius,

Tel.: +370 5 212 7476.

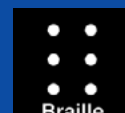
Website: www.valdovurumai.lt



Reconstructed palace functions as National Museum - Palace of the Grand Dukes of Lithuania. The Museum was founded in 2009 to collect, preserve, conserve, restore, research, interpret, and display in the restored historical residence of Vilnius Lower Castle the history and cultural heritage of the Grand Duchy of Lithuania and its rulers, especially the rich and important collections of archaeological artefacts and European decorative and fine arts from the Gothic to the Baroque periods as well as important materials related to Lithuanian philology.

The Museum is fully accessible for wheelchair users. It is not adapted for the assistance dogs; there is little information in Braille, and it is adapted for the Lithuanians only. If arranged in advance you or your group could be accompanied by a Museum worker, there are some tangible replicas of the exhibits which could be presented to the visitors.

Accessibility



Braille



Tammistu Manor House



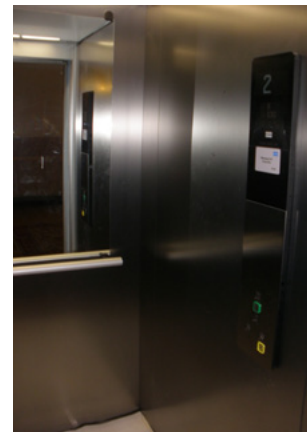
contacts

Tartu County, Tartu Municipality,
Tammistu village

Website: www.agrenska.ee

THE FREEDOM OF
MOVEMENT.
Website on information
about accessibility in
Estonia

<http://liikumisy-abadus.invainfo.ee/?go=index&lang=engl>



Tammistu Manor is located in Tartu Municipality. It is located 15 km from Tartu, the second largest city in Estonia, but at the same time very rural environment. Estonian Agrenska Foundation has been restoring the manor. A family centre for disabled children and young adults is located there.

The Tammistu Manor is suitable for people in wheelchairs and another people who have physical disability. The building is accessible as well for people with intellectual disabilities and for people with psychiatric problems.

The house is accessible for people in wheelchair – there is an elevator which goes through three floors. There is a ramp in the back of the house and on the side of the house. There are two toilets for people in wheelchair. Tammistu Manor is still developing and Estonian Agrenska Foundation has given many thoughts about turning the centre as accessible as possible because of the target group (disabled children and young adults).

Accessibility





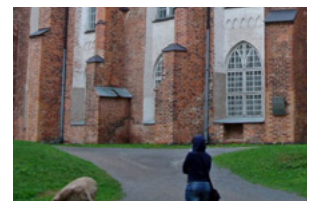
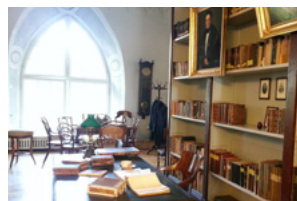
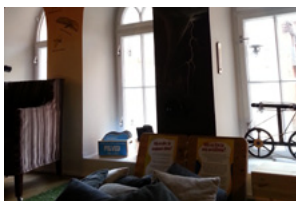
Dome Cathedral and Towers



contacts

25 Lossi street, Tartu

Website: www.ajaloomuseum.ut



In the Dome Cathedral is at the moment the History Museum of Tartu University. Different kind of exhibitions are held in History Museum. In the big white hall as well many concerts, functions and celebrations take place.

The Dome Cathedral is accessible for people in wheelchair. They have renovated the oldest elevator in Tartu, the Schindlers elevator (85 years old), and now the white hall, exhibitions, Morgenstern hall and the attic are accessible. The building is accessible as well for people with intellectual disabilities – they have a special guide for them.

Accessibility



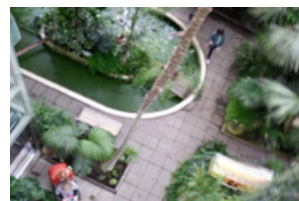
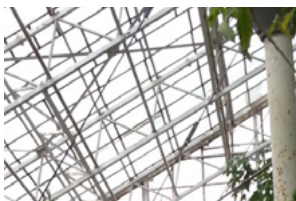


Tartu University's Botanical Garden



contacts

38 Lai street, Tartu
Website: www.ut.ee



The Botanical Garden was established in 1803. At the moment different kind of exhibitions take place there, as well concerts. It's a very famous place for newlyweds to do their photoshoot in. All the springtime receptions of Tartu University take place in the Botanical Garden. It's a place for town residents to go and take a walk and for students to go and study.

The Botanical Garden is suitable for people in wheelchair and for people with physical disabilities. New elevator has been built in the palm house. Moving around in the garden area is not difficult, there are plenty of footpaths where it's easy to move. Entering the palm house is a bit tricky – the accessible entrance is in the back of the house and there are no signs. The front entrance has 4 steps but the side entrance none.

Accessibility



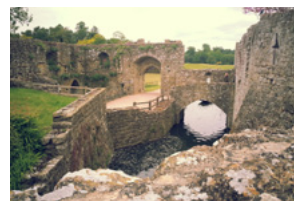


Leeds Castle



contacts

Leeds Castle Maidstone
Kent ME17 1PL
Tel: +44 (0) 1622 765400
Website: www.leeds-castle.com



Leeds Castle has been a Norman stronghold; the private property of six of England's medieval queens; a palace used by Henry VIII and his first wife Catherine of Aragon; a Jacobean country house; a Georgian mansion; an elegant early 20th century retreat for the influential and famous; and in the 21st century, it has become one of the most visited historic buildings in Britain.

A fully accessible mobility bus is available near the ticket office, running regularly throughout the day. This service is operated free of charge to visitors requiring assistance. Visually and hearing impaired visitors can be assisted by their guide and hearing dogs in the castle and grounds. The castle is accessible for the majority of visitors via the main front door where there is a ramp. As Leeds Castle is an ancient building, there are some restrictions.

Accessibility

Guide dogs welcome



Canterbury Cathedral

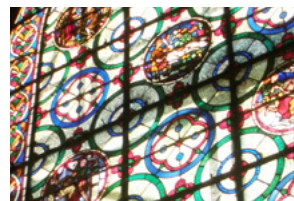


contacts

Cathedral House,
11 The Precincts, Canterbury,
CT1 2EH United Kingdom
Tel: +44 (0) 1227 762862
Website: www.canterbury-cathedral.org

Download:
[Easy access historic buildings 2012](#)

Download:
[Easy access historic landscape 2013](#)



Church of the worldwide Anglican Communion and seat of the Archbishop of Canterbury. The Cathedral is both a holy place and part of a World Heritage Site. It is the home of a community of people who seek to make the Cathedral a place of welcome, beauty and holiness. We hope you will be inspired to visit Canterbury and the Cathedral and we look forward to welcoming you.

Large print copies of Orders of Service and Hymns are usually available; please ask the Virgiers or Stewards on arrival. A hearing loop has been installed in the Nave, Quire, Presbytery and Crypt. Hearing aid users should adjust their aid to T. At special times of the year (Christmas, Easter and during the summer) there will be a BSL tour led by Cathedral guide Bridget Bree (NVQ3 BSL). At times, Evensong is held with BSL interpretation.

Accessibility

The Luigi Bailo's museum



contacts

The Luigi Bailo's Museum
Borgo Cavour, 24
31100 Treviso Italia
Tel.: 0422 658442
Fax: 0422 591337
musei.civici@comune.treviso
Website: www.treviso.info.com/museobailo.htm



The Museo Civico Luigi Bailo (L. Bailo's Museum) was founded by homonymous abbot in 1879 and it is the main current seat of the museums of Treviso, together with the complex of St. Catherine. The church was built next to the friars Gesuati's monastery founded in the XV century. The building has been damaged during the 1° World War and more seriously during the 2° World War. After restoration works it has been re-opened in 1952 but it closed again for additional refurbishment purposes in 2003 and it is still closed. The Museum indoor spaces are divided into 3 main sectors:

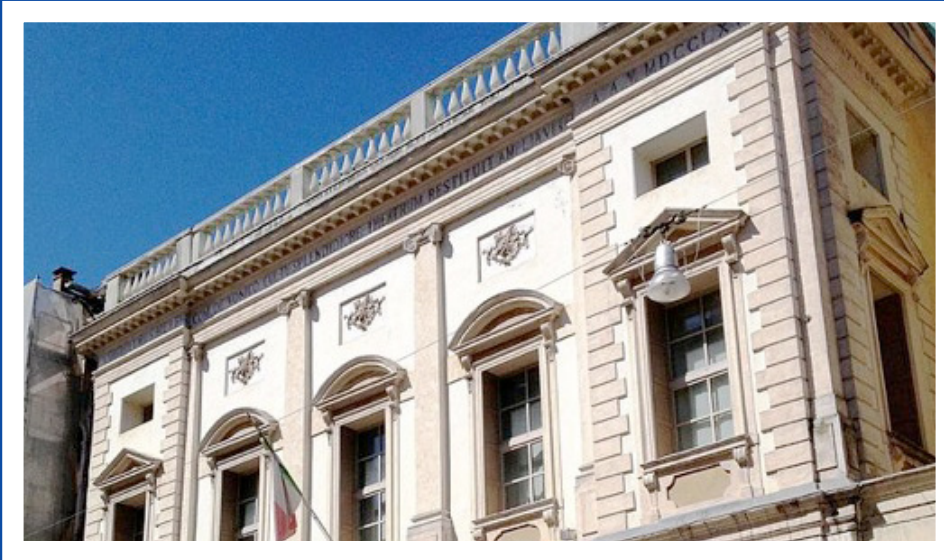
- The Archaeological Part, located in the ground floor, shows several finds built in the Copper Age, in the Bronze Age, in the Iron Age and in Paleoveneto.
- The Picture Gallery – Pinacoteca is developed into several rooms, mostly located on upper floor which surround the two cloisters. It shows works of famous painters as Giovanni Bellini, Jacopo da Valenza and Cima da Conegliano.
- The Modern Art Gallery exhibits works by regional artists made in 19th and 20th centuries.

Part of the works are now located at the Museum of St. Catherine.

Accessibility



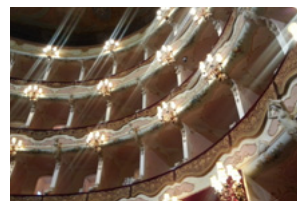
The Treviso Municipal Theatre



contacts

Corso del Popolo 31,
31100 Treviso Italy

Website: www.teatrispa.it/fondazione-cassamarca/teatrispa/index.html



The Treviso Municipal Theater has been built in 1692 and refurbished for the first time in 1763. The building was well known across Italy and he hosted famous artists and aristocrats: Mr Paganini performances and Napoleon wedding party.

Two big fires destroyed it in 1846 and in 1868 but it was rebuilt soon after by the Architect Andrea Scala.

Since 1968 the Theatre has been part part of the 24 Traditional Italian Theatres according to the Italian law.

Unfortunately the Theatre has been closed in 1998 since it was not conform to standards.

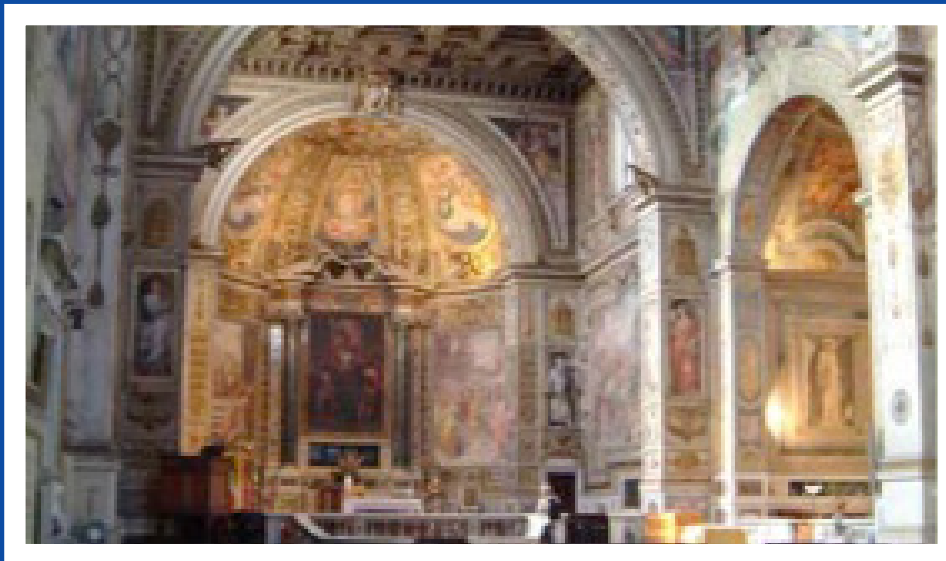
With the aim to make it accessible, in 2000 the Treviso Municipality decided to sign an agreement with Cassamarca Foundation which has been charged of the whole Theatre restoration works while the Municipality maintained the building property.

The municipality and Cassamarca Foundation are now planning additional interventions with the aim to make the Theatre more accessible for people with special needs.

Accessibility



Santa Susanna Church



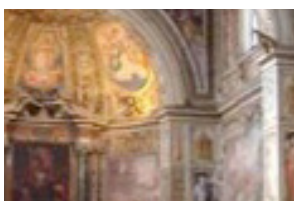
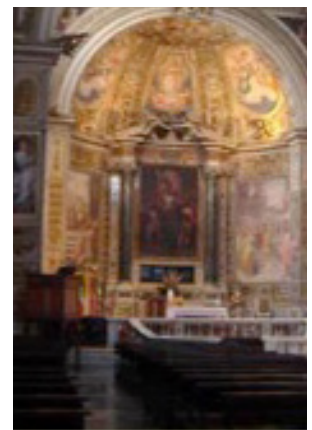
contacts

Via XX (Venti) Settembre 1500187,
Roma, Italy

Tel.: 06,4201.4554

Fax: 06.474.0236

Website: www.santasusanna.org/index.html



The Church of Saint Susanna at the Baths of Diocletian (Italian: Chiesa di Santa Susanna alle Terme di Diocleziano) is a Roman Catholic parish church located on the Quirinal Hill in Rome, Italy. There has been a Titular church associated to its site as far back as A.D. 280. The current church was rebuilt from 1585 to 1603 for a monastery of Cistercian nuns founded on the site in 1587 which still exists there.

The ramp is made of a metal structure with telescopic feet that allows to overcome the difference of height of the entrance stair of Santa Susanna Church in Rome. The platform is a main metal structure, a secondary texture of iron bars and a walking surface of iroko slats spaced one another in such a way to allow the perceptive usability of the occupied base. The metal hand rail is fitted on glass plates that mitigate the impact of the structure.

Accessibility



Palestrina (Rome) Sant'antonio Church



contacts

Via Alighieri, 00036 Palestrina,
Rome, Italy

Website: www.romaepiu.it/en/chiesa-di-santantonio-abate/



The church of Sant'Antonio Abate was designed by Orazio Turriani and built by Sebastiano Fantoni. In 1614 the convent and the church were enhanced by Sebastiano Fantoni who extended the library with more than 1000 volumes, further added to by the generous donations of the Colonna and Barberini families. The church, which stands near the magnificent pagan temple dedicated to the goddess Fortuna, is well-loved by the people of Palestrina who are devoted to the Madonna del Carmine.

The platform was fitted to overcome a height difference of few steps inside a Church which would be not accessible to all.

A secondary stairway was partially occupied, with the implementation of an horizontal platform to reach the elevator platform commanded by a wall electro-mechanical system.

Accessibility



Revoltella Museum



contacts

Museo Revoltella

27, Via Diaz

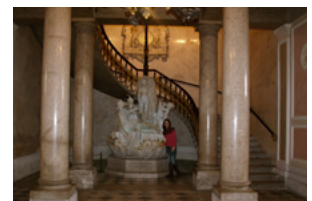
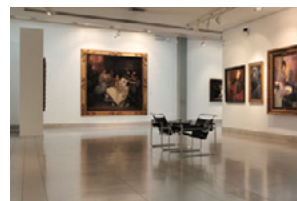
34123 Trieste

Italy

Tel.: 040 675 4350 / 4158

Fax: 040 675 4137

Website: www.museorevoltella.it/museo.php?sub=7&ID=39



The Revoltella Museum (it. Museo Revoltella - Galleria d'arte moderna) is a modern art gallery founded in Trieste in 1872 by Baron Pasquale Revoltella. The baron, after he left his house to the city (located in Piazza Venezia) and all the works, furniture and books it contained.

The main building was built in 1858 designed by Friedrich Hitzig. To expand the original collection, in 1907 the City acquired the Brunner Building located nearby. This building was completely used only since 1963, following the restructuring of Carlo Scarpa.

The museum today is composed of three buildings, with main entrance from Via Diaz, for an exhibition area of 4,000 square meters.

The modern art gallery and the 3rd floor of Baron Revoltella house are accessible for wheelchair users.

Accessibility



Miramare Castle



contacts

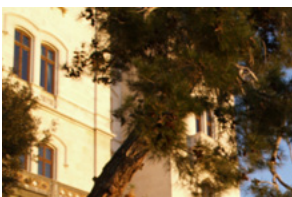
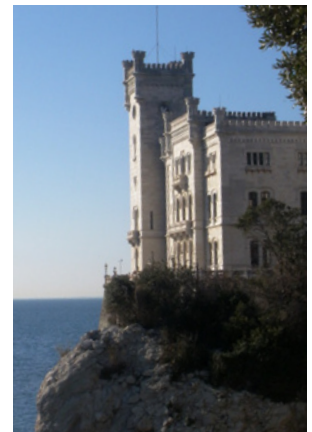
Parco di Miramare

Viale Miramare - 34151 Trieste

Tel.: +39 040 224143

Fax: +39 040 224220

Website: www.castello-miramare.it/eng/home/home.php



Miramare Castle is surrounded by a flourishing park full of precious botanic species, and has a charming panoramic view, given its location on a cliff high above the sea. It stands on the peak of the rocky promontory of Grignano in the Gulf of Trieste, and is about 10 km from the city itself.

Commissioned in the second half of the 19th century by the Archduke Ferdinand Maximilian of Hapsburg as a residence for himself and his wife, Charlotte of Belgium, the castle offers today's visitors an example of a luxurious aristocratic residence which has preserved its original furnishings.

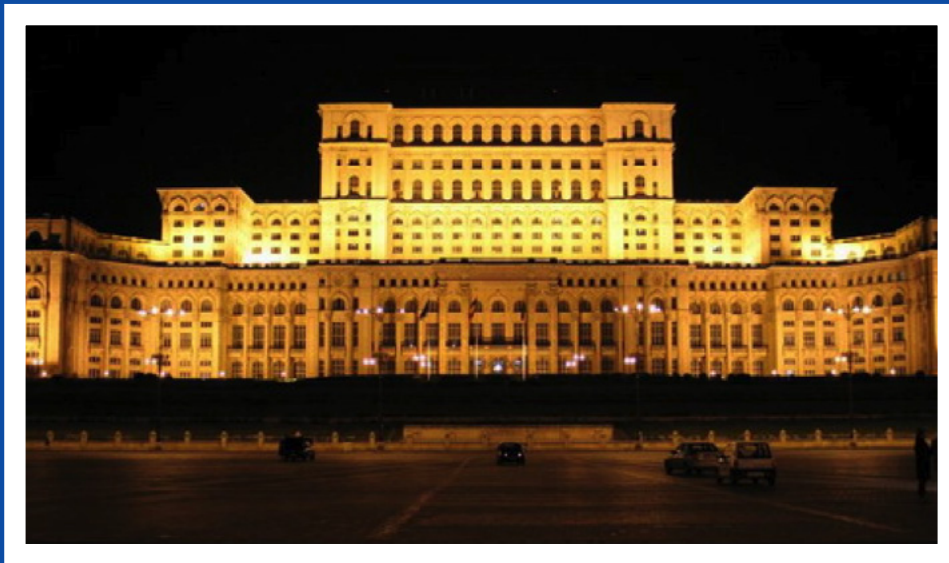
The ground floor of the Castle is accessible to wheelchair users, a guide book for visual impaired is available and there are some touchable objects.

Accessibility



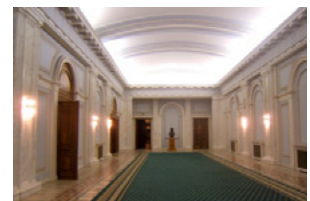
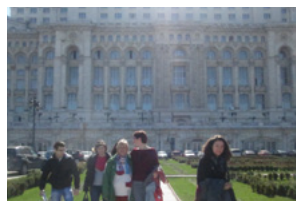
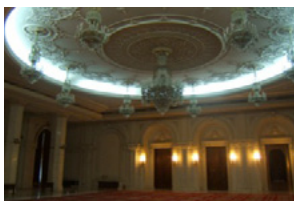
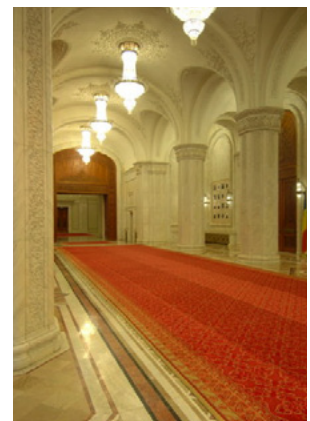


The Parliament House



contacts

Izvor Street, nr. 2-4,
district 5, Bucharest
Tel: + 40-21-312 09 02
Website: www.casapoporului.ro



The building, with a surface of 330,000 hectares, is part of the "Guinness World Records" in the "buildings", the 2nd largest in the world after the Pentagon.

It was built during 1979-1989 during and the building has a length of 270 meters, width 245 meters, height of 86 meters (over the 0), depth of 92 meters (below ground level).

It is mostly accessible for people with disabilities. It has ramps, lifts and a few accessible toilets for people with disabilities. Also, for tourists there are available audio guides.

Accessibility





Museum Grigore Antipa



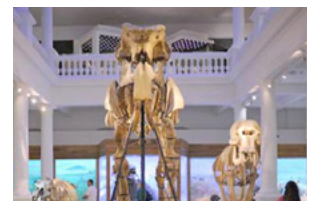
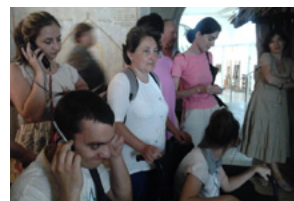
contacts

Adress: 1st Sos. Kiseleff,

Bucharest, district 1

Tel: +4 021.312.88.26

Website: www.antipa.ro/en



The National Museum of Natural History was founded in Bucharest in 1834. The actual building in which exists the Museum even now was built and developed between 1893-1944. There you can find exhibition about the fauna and flora of Romania and not only. Even though it is a historical building, in its process of restoration it became one of the most accesible buildings in Bucharest. The museum is very friendly with wheelchair users and also with the visual impaired.

The museum has reliefs dioramas showing the permanent exhibition with Braille explanations, it has tactile mats for the self movement of the blind visitors and also audio books. Periodically, the museum organizes visits with audio explanations dedicated to all audiences, including visual impaired. 2 of the curators of the museum were trained in sign language, so they can organize visits for people with hearing disabilities. The museum has a ramp on the entrance, adapted toilets and ramp inside the museum, so the access of disabled people can be very easy.

Accessibility



Conclusions and lessons learned for the future

In the context of the historical heritage buildings, the theme of accessibility represents a key element in measuring the quality of the services to the tourists by the public administrations: it furthermore enhances the potential visitor's immediate perceptions of a site. Aside from more general considerations regarding the advantages of inhabiting a space designed to be easily accessed, the main aim of the project is that of evaluating the hypothetical impacts of this particular section of tourism on:

- the social and economic development of the involved urban contexts, highlighting the impacts of improvement in accessible tourism in terms of social inclusion and employment;
- the updating and upgrading of the training offer and training methods, to include subjects and experiences dealing with accessibility in tourism (or accessibility in general), also with the support of ICT (for instance in the availability of information related sites accessibility);
- the infrastructures and services of the urban or semi – urban contexts, with the inclusion of initiatives, services, investments to improve the accessibility standards of a city.

To do so, the project strives to measure itself against a number of international partners having outstanding best practices to present in one or more in order to gain a more in depth understanding of the pathways which have already produced satisfactory results in this field.

In doing so, the project considered 3 main groups of actors / partners, which are consistent with the project aims:

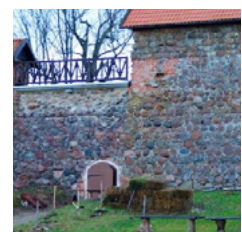
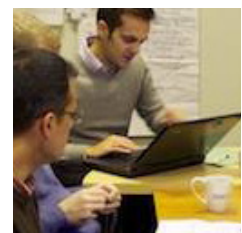
- training and education stakeholders;
- companies and associations of companies dealing with tourism and the welcoming industry;
- local public bodies and their associations.

Main findings of the project

1) Accessibility as a flexible context

The sessions held throughout the course of the project revealed that the concept of accessibility needs to be considered in a specific manner in respect to each individual category of potential impairment.

For example this theme can be placed in relation to different physical conditions (.i.e. blindness, hearing impairments) affecting both the young, but also the elderly, who often require a heightened amount of care and attention in their interaction with the space.



Conclusions and lessons learned for the future

2) The potential of accessible tourism for economic development

Individuals affected by so-called 'disabilities', represent a section of the population with incredible market potential, corresponding to 2 billion euros a year in the U.K. alone. This study is based on the assumption that an 'impaired' individual necessitates more specific types of facilities, often travels with a companion, and predictably tends towards a greater expenditure than the 'average' tourist. The comparison of these factors emphasises the necessity towards a further opening of this type of market, which is characterised by enormous potential and possibilities for development.

3) The need of co-operation between different stakeholders: public-private partnership

The research carried out by different partners throughout the project is also indicative that a mobilisation towards this particular target needs to be carried out by both private and public sectors in order to result effective. A possible exemplifying path derived from the standardization of the best practices analysed during the project is the following:

- infrastructural investments (not only related to historical heritage buildings): indispensable amendments impacting both public infrastructures and spaces such as museums, restaurants and hotels need to be effected throughout the territory. This involves huge investments which can be promoted through public private partnership, according to the mechanism of project financing with the participation of private investors, private sector managers and companies and public authorities;
- social and Educational background.

Future exploitation of the project results.

The History for You and for Me, represents an incredibly important moment in the growth and development of the concept of accessibility, and the differing experiences presented in the project are indicative of an opportunity for expansion for all of the areas involved.

This material has been gathered with the aim that:

- educational providers can learn from the strategies adopted to include new methodologies and activities in their training, also considering reinforced co-operation with association, local enterprises and the civil society;
- different local administrations may utilise it in order to continue implementing existing strategies and ideate new ones, deriving inspiration from the presented best practices promoted by local

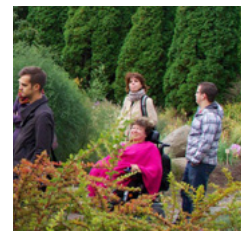
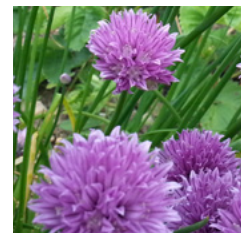


Conclusions and lessons learned for the future

administrations in co-operation with other partners;

- a more general awareness raising action can be implemented by local stakeholders, including public authorities, education providers, associations, bearing each individual citizen's well being in mind, with the aim to make sure that accessibility becomes a global concern, and a matter of social cohesion.

This positive first experience encourages all the parties involved in the project to persevere in a common journey towards a more in depth examination of the theme of accessibility within the field of tourism, this especially through their participation in new European projects.





SUSTENTO - LV

Antonijas street 24 - 6, Riga - LV 1010
email: sustento@sustento.lv
Tel./Fax: +371 67590437
Website: www.sustento.lv



Pixel Service & Consulting - ITA

Pizza Benco 4 - 34122 - Trieste- Italy
email: info@pixelsc.it
Tel.: +39 040 9890940 Fax +39 040 9890634
Website: www.pixelsc.it



Lithuanian Forum for the Disabled (LNF) - LT

Gėlių g. 7, Vilnius; Lituania - 01137
email: info@lnf.lt
Tel.: +370 607 40619 - tel./fax +370 5 269 13 09
Website: www.lnf.lt



The BumbleBee Alliance CIC's - UK

Aylesham Parish Council Offices, Aylesham House, Dorman Avenue South, Aylesham, Nr
Canterbury - Kent - CT3 3AA
email: info@bumblebeealliance.com
Website: www.bumblebeealliance.com



Consulmarc Sviluppo S.r.l. - ITA

Via Pezza Alta 10 - Oderzo -Italy
email: segreteria@eanetwork.be
Tel. +39(0)422853611
Website: www.consulmarc.it



SA Eesti Agrenska Fond - EE

Lunini 6 - Tartu 51014- Estonia
email: agrenska@agrenska.ee
Tel.: M. Joost +372 5014 164, K. Padjus +372 53637175
Website: www.agrenska.ee



Juvenile Justice International CIC - UK

Shepway Business Centre - Shearway Road - Folkestone - Kent - England -
CT19 4RH
email: dg@juvenilejusticeinternational.org
Tel: +44 (0)1304 820863
Website: www.juvenilejusticeinternational.org



Federatia ONPHR - National Organization of Disabled People

B-dul Maresal Averescu nr. 17, Pavilion F, et. 3, Bucharest, sector 1, 011454,
Romania
email: office@onphr.ro
Tel: + 40-21-224.14.89
Website: www.onphr.ro